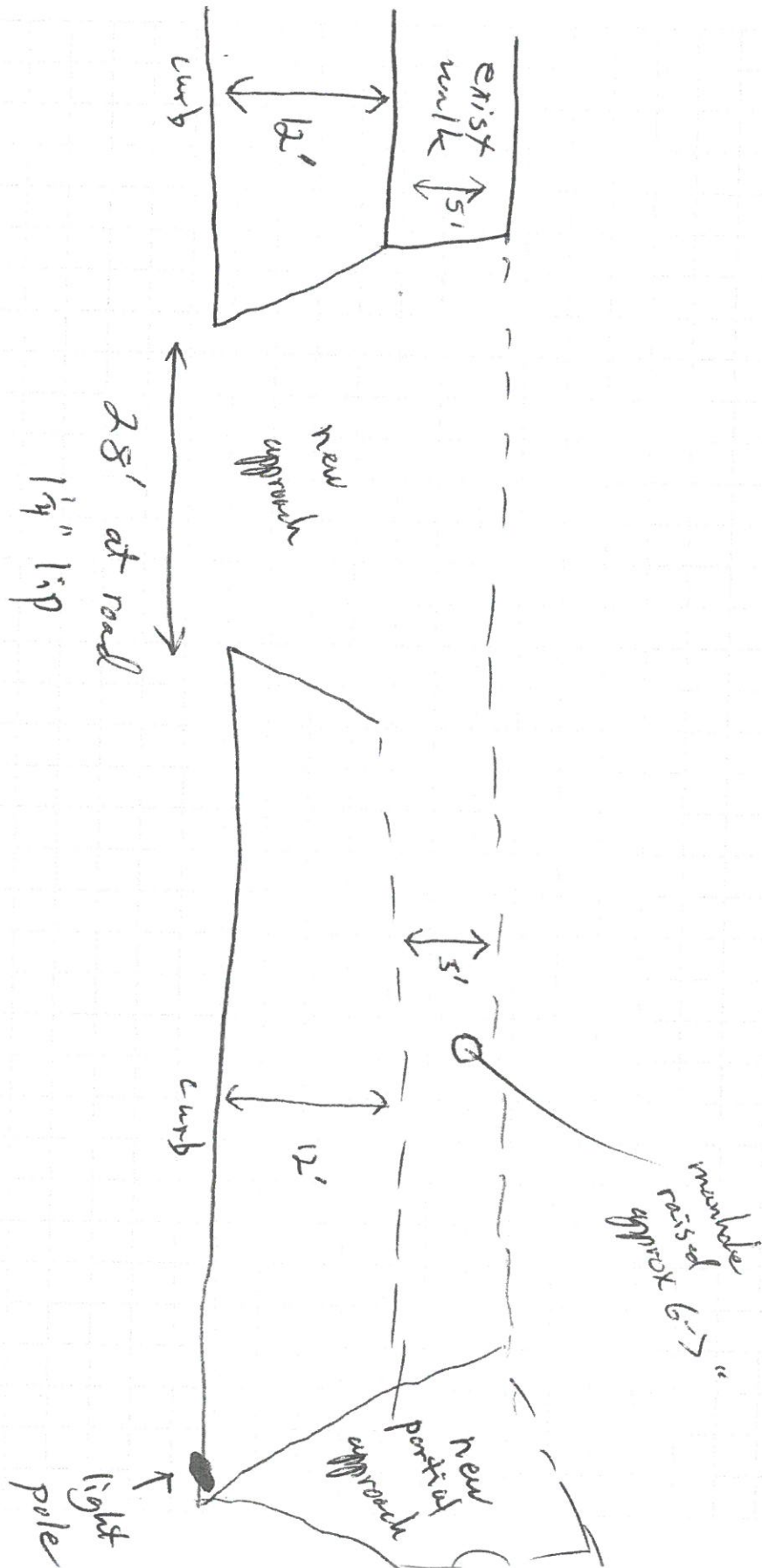


302 E. Washington St.

# HOLNAM



Class C concrete  
w, 5/8 bar 2' ctr,



Hobson St.

W. Washington St.

existing sidewalk

Grass Area

Proposed New Sidewalk & Approaches

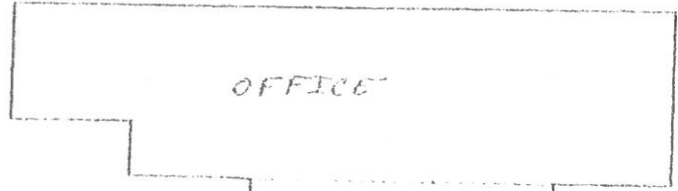
28'

Grass Area

28'

existing concrete

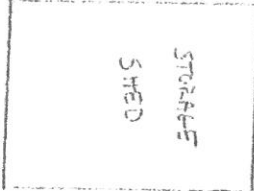
E. River View Ave.



OFFICE



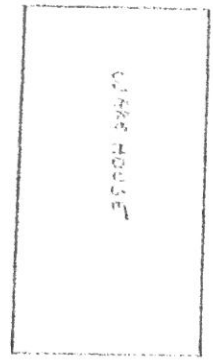
GARAGE



STORAGE SHED



NORTH



WORK HOUSE

APPLETON  
YARD



DIESEL FUEL TANK



Tree

4-26-91

# Dankoltz Supply

Work done 4/24/91  
Burdett Rathge

Riverside

E. Washington

302 E. Washington  
Office

MH

6" vit 49.3' manhole

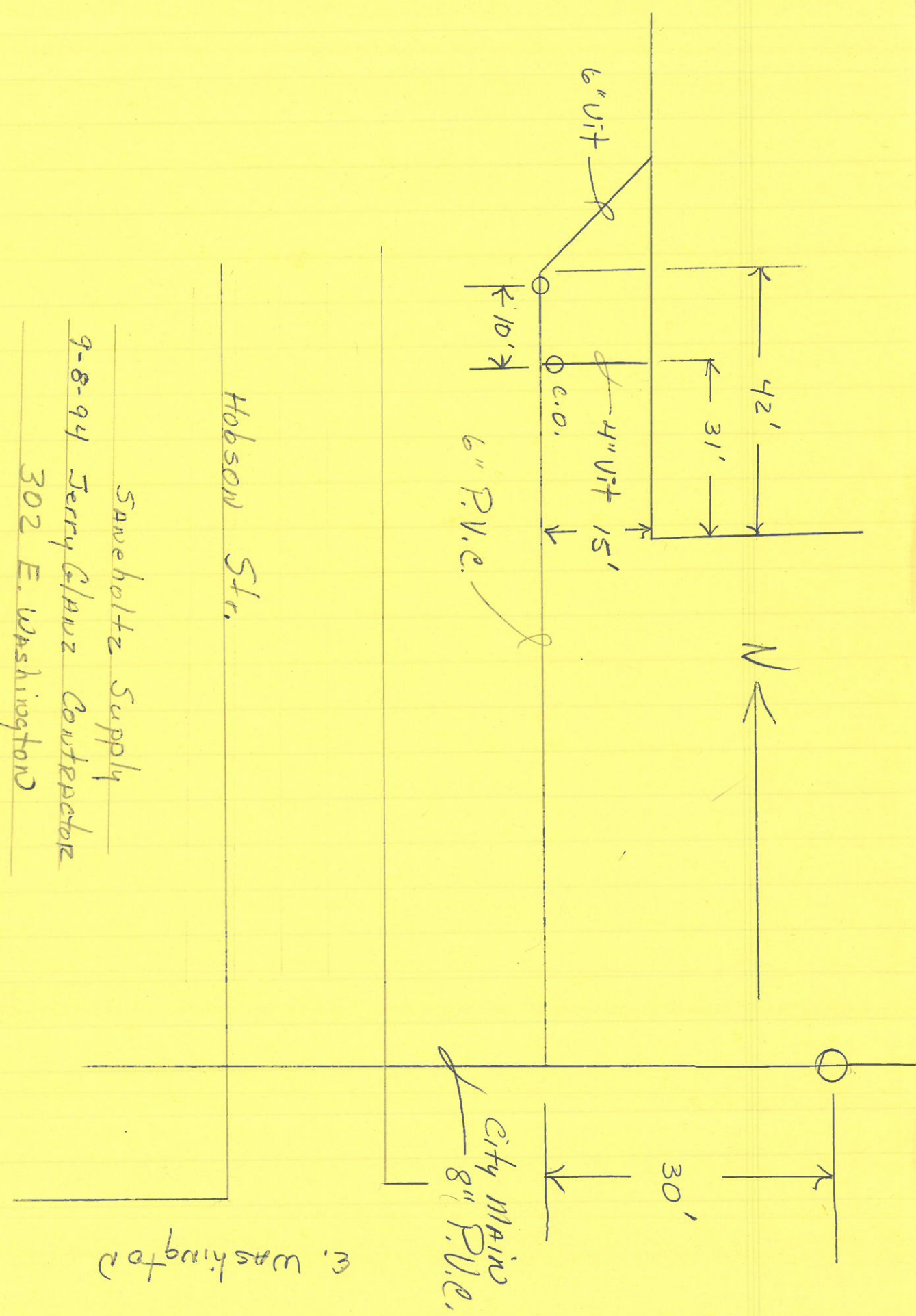
23'

6.4' Deep F.L.

6" vit

Removed old Manhole replaced with  
6" SDR PVC + 45° ell (fence each end)  
There were no other tile connected  
into old Man hole

Copyright © 1991 by Dankoltz Supply  
All rights reserved. No part of this publication  
may be reproduced, stored in a retrieval system,  
or transmitted, in any form or by any means,  
electronic, mechanical, photocopying, recording,  
or by any information storage and retrieval system,  
without the prior written permission of Dankoltz Supply.



Hobson St.  
Saveholtz Supply  
9-8-94 Jerry Glauz Contractor  
302 E. Washington

E. Washington

City Main  
8" P.V.E.